



Box Properties

--Description--

Name:

Type: Vented Box

Shape: Prism, square

--Box Parameters--

Vb = 5.546 cu.ft

V(total) = 6.598 cu.ft

Fb = 36.05 Hz

F3 = 27.07 Hz

Fill = none

--Vents--

No. of Vents = 1

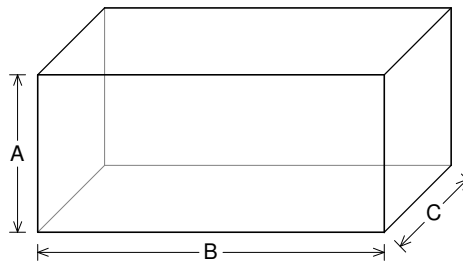
Vent shape = rectangle

Vent ends = one flush

Hv = 14 in

Wv = 3 in

Lv = 12 in



--External Dimensions--

A = 20 in

B = 44 in

C = 16 in

--Internal Dimensions--

A = 18.5 in

B = 42.5 in

C = 14.5 in

--Wall Thickness--

Front = 0.75 in

Side = 0.75 in

Driver Properties

--Description--

Name: SXX 18 D4

Type: Standard one-way driver

Company: RE Audio (2015)

--Configuration--

No. of Drivers = 2

Mounting = Standard

Wiring = Parallel

Drivers sum coherently = Yes

Dual voice coils = parallel

--Driver Parameters--

Fs = 45.06 Hz

Qms = 10.91

Vas = 1.768 cu.ft [3.537]

Xmax = 1.1 in

Sd = 180.5 sq.in [360.9]

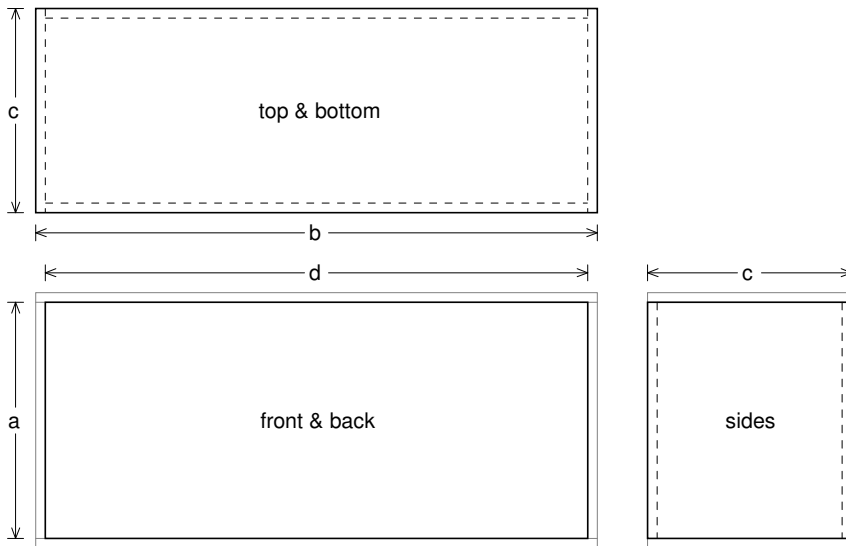
Qes = 1.601

Re = 1.987 ohms [0.993]

Le = 2.274 mH [1.137]

Z = 2.384 ohms [1.192]

Pe = 1200 watts [2400]



Box Parts

Box Shape: Square Prism

- 1 Top, 1 Bottom: depth (c) = 16 in
width (b) = 44, thickness = 0.75 in
- 1 Front, 1 Back: height (a) = 18.5 in
width (d) = 42.5, thickness = 0.75 in
- 2 Sides: height (a) = 18.5 in
depth (c) = 16, thickness = 0.75 in

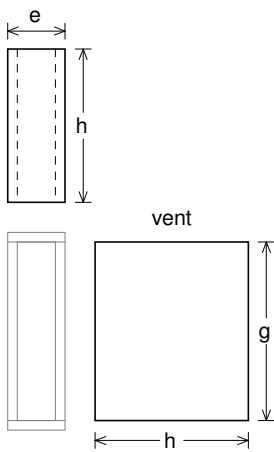
--Driver Mounting--

Mounting: Front

Aim: All drivers face same direction

--Vent Parts--

- 1 Top, 1 Bottom:
width (e) = 4.5, length (h) = 12 in
thickness = 0.75 in
- 2 Sides:
height (g) = 14, length (h) = 12 in
thickness = 0.75 in





Wiring Diagram

